

Illustration - Type - E

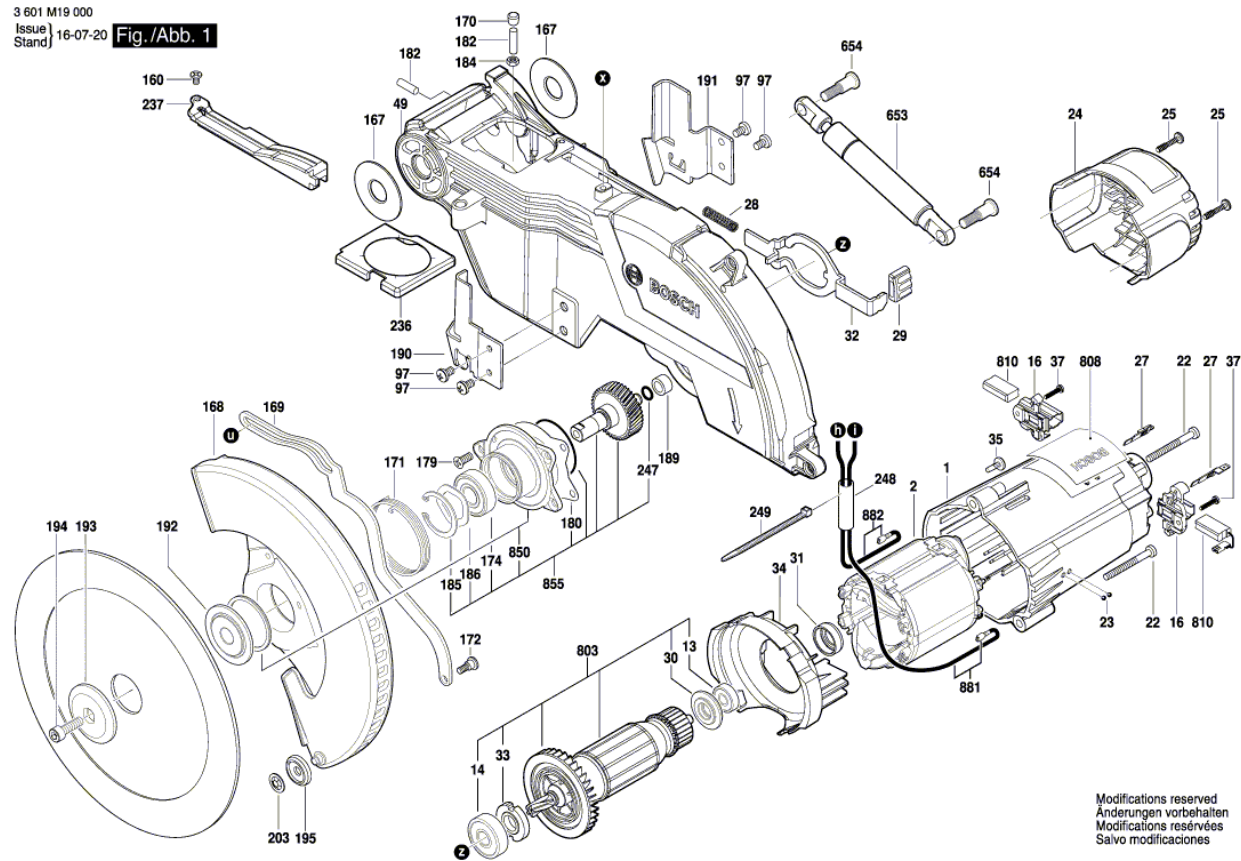
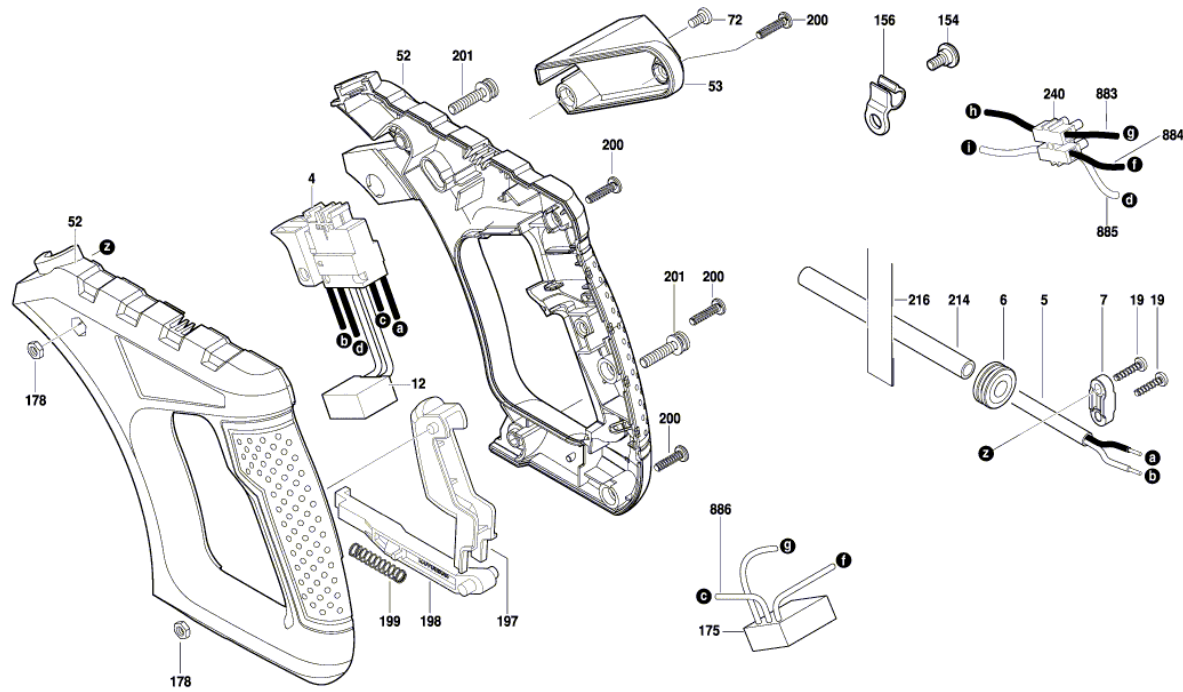


Illustration - Type - E

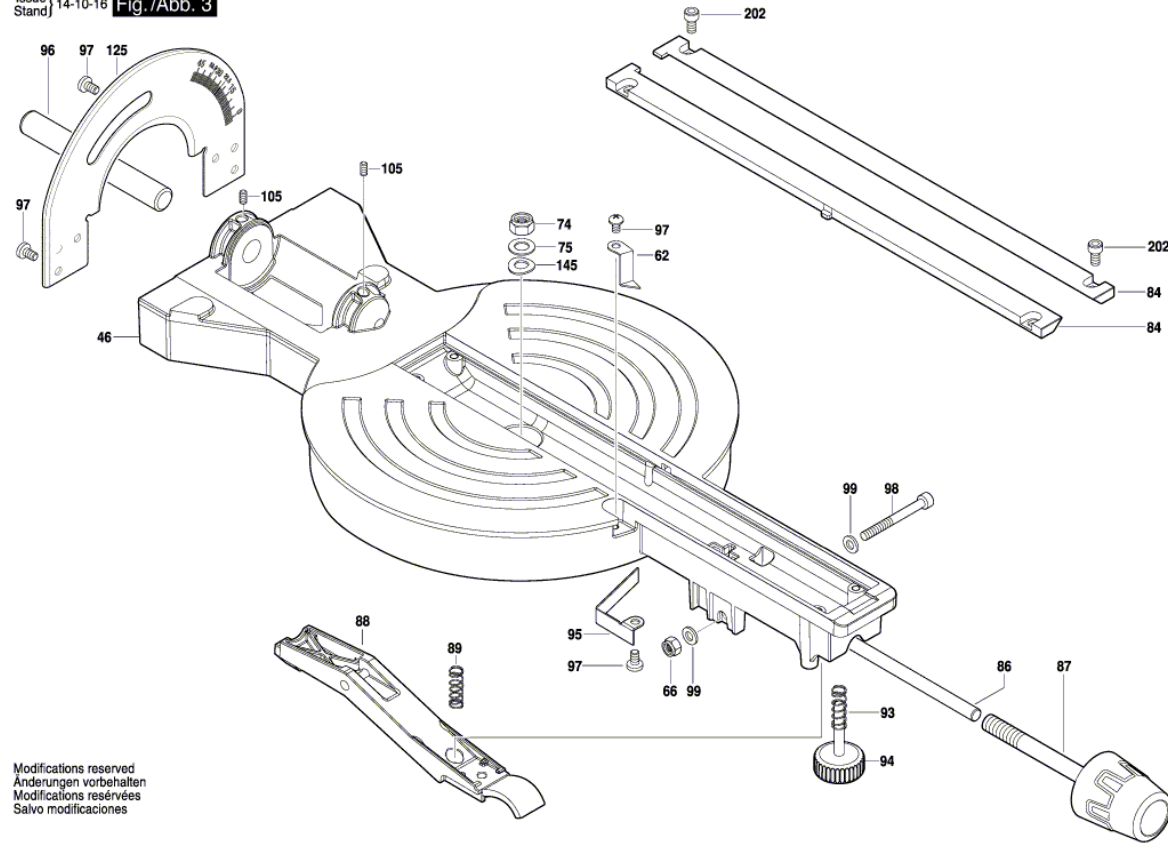
3 601 M19 000
 Issue |
 Stand | 15-12-15 **Fig./Abb. 2**



Modifications reserved
 Änderungen vorbehalten
 Modifications réservées
 Salvo modificaciones

Illustration - Type - E

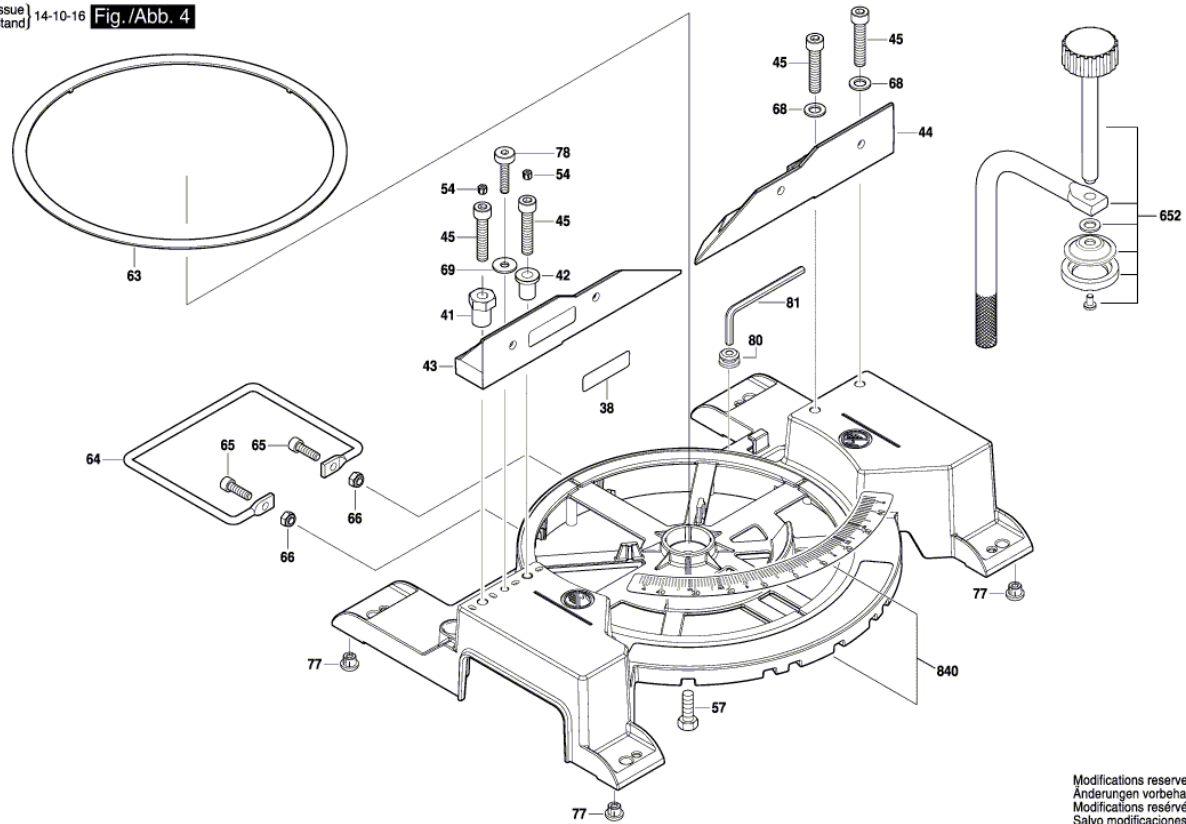
3 601 M19 000
Issue |
Stand | 14-10-16 Fig./Abb. 3



Modifications reserved
Änderungen vorbehalten
Modifications réservées
Salvo modificaciones

Illustration - Type - E

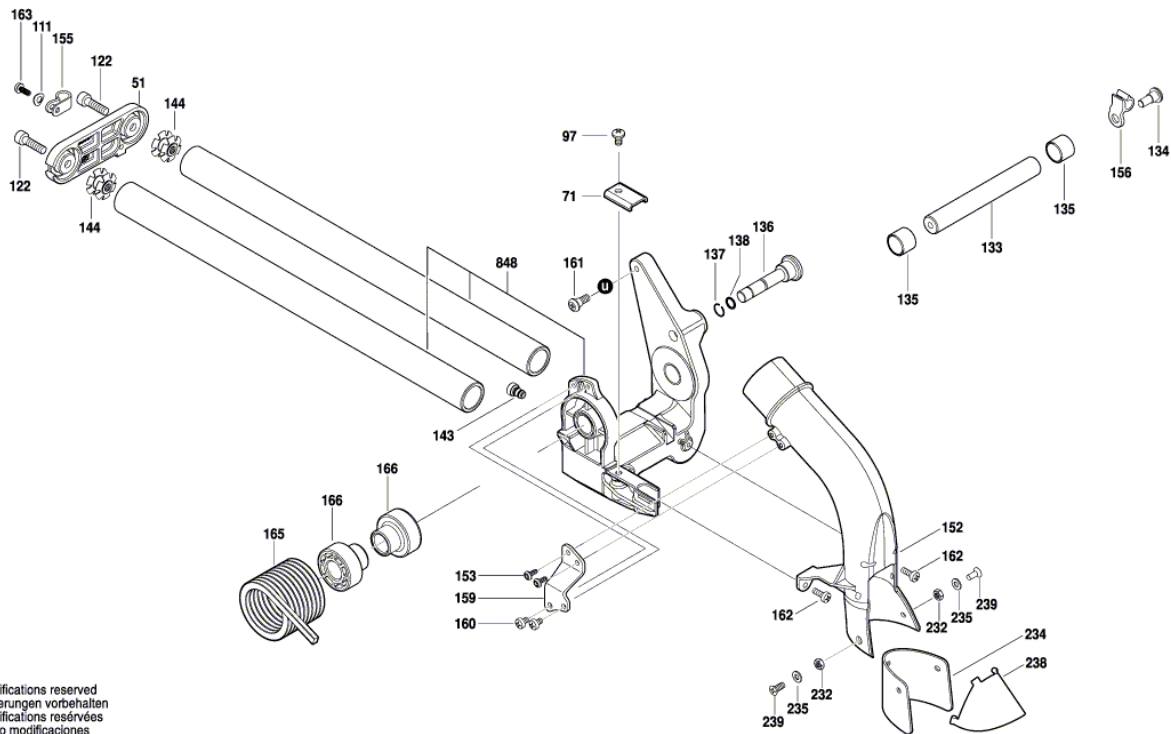
3 601 M19 000
Issue | 14-10-16
Stand | Fig./Abb. 4



Modifications reserved
Änderungen vorbehalten
Modifications réservées
Salvo modificaciones

Illustration - Type - E

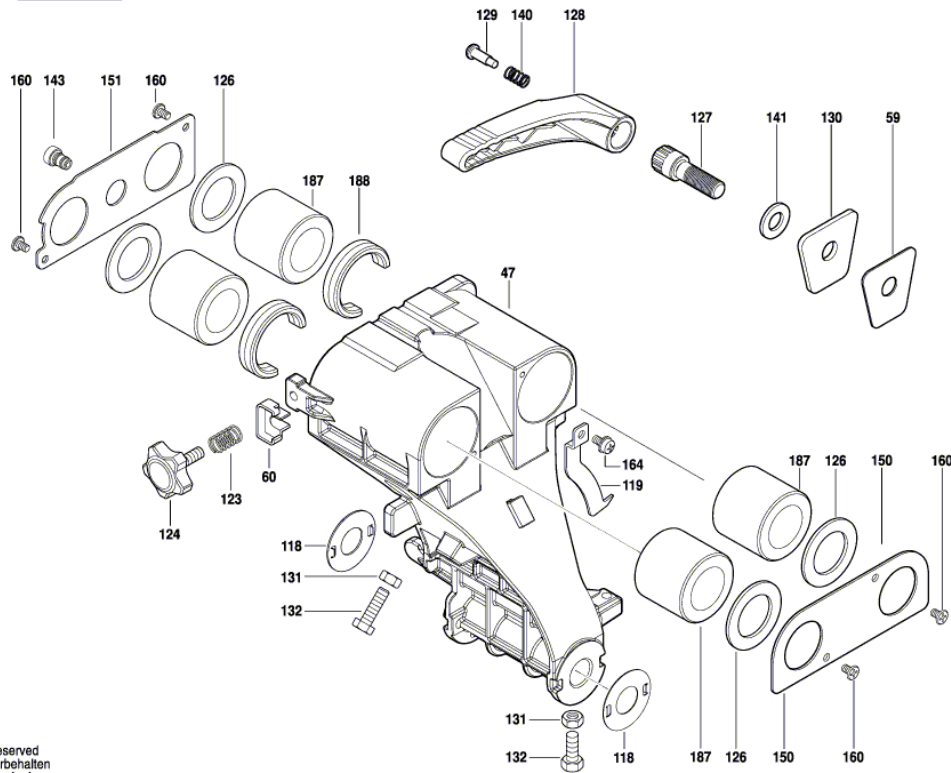
3 601 M19 000
Issue | 14-10-16
Stand | **Fig./Abb. 5**



Modifications reserved
Änderungen vorbehalten
Modifications réservées
Salvo modificaciones

Illustration - Type - E

3 601 M19 000
Issue | 16-06-24
Stand | Fig./Abb. 6



Modifications reserved
Änderungen vorbehalten
Modifications réservées
Salvo modificaciones

Spare parts list

Item	Part Number	Description	Illustration
1	1 609 B04 181	Motor Housing BLUE	1
2	1 619 P04 474	Field 230V	1
13	1 609 B04 083	Ball Bearing	1
14	1 619 P06 374	Bearing Cover Plate	1
16	1 619 P06 212	Brush Holder	1
22	1 609 B04 117	Screw	1
23	1 619 P00 291	Ball BLUE	1
24	1 609 B04 008	End cap	1
25	1 609 B00 921	Special Screw	1
27	1 619 P06 213	Right Angle Plug	1
28	1 619 P01 642	Compression Spring	1
29	1 609 B04 070	Cap	1
30	1 609 B04 071	Sealing washer	1
31	1 609 B04 072	Rubber Ring	1
32	1 609 B04 073	Guide Bracket	1
33	1 609 B04 074	Lock Nut	1
34	1 609 B04 075	Baffle	1
35	1 609 B04 200	Cover	1
37	1 609 B04 208	Screw	1
49	1 609 B02 223	Arm	1
97	1 609 B04 086	Screw	1
160	1 609 B01 561	Screw	1
167	1 609 B01 602	Wear Plate	1
168	1 609 B04 188	Lower guard	1
169	1 609 B04 001	Linkage	1
170	1 609 B04 002	Cover	1
171	1 609 B04 004	Spring	1
172	1 609 BP7 145	Screw	1
174	1 609 B01 255	Ball Bearing	1
179	1 609 BP7 134	Tapping Screw	1
180	1 609 B04 248	Seal	1
182	1 609 B04 205	Set screw	1
184	1 609 BT4 033	Nut	1
185	1 609 BP7 068	Spring retaining ring	1
186	1 609 BP7 050	Washer	1

Spare parts list

Item	Part Number	Description	Illustration
189	1 600 200 029	Plain bearing	1
190	1 609 B04 017	Deflector	1
191	1 609 B04 028	Deflector	1
192	1 609 B04 018	Clamping Flange	1
193	1 609 B06 289	Clamping Flange	1
194	1 609 BP7 061	Flange Bolt	1
195	1 609 B04 020	Wheel	1
203	1 609 B00 458	Quick-Lock	1
236	1 609 B04 220	Rubber Strip	1
237	1 609 B02 221	Cover	1
247	1 609 B04 228	O-Ring	1
248	1 609 B00 799	Bushing	1
249	1 609 B05 329	Clip	1
653	1 609 B02 225	Damper	1
654	1 609 B02 418	Shoulder Screw	1
803	1 609 B03 793	Armature assembly 230V	1
808	1 609 BN0 128	Nameplate	1
810	1 609 B06 661	Carbon-Brush Set	1
850	1 609 B05 349	Gear cover	1
855	1 609 B03 789	Output Shaft	1
881	1 609 B02 207	Connecting Wire	1
882	1 609 B02 208	Connecting Wire	1
4	1 609 B04 211	On-Off Switch	2
5	1 609 B04 245	Power supply cord EU	2
6	1 609 B01 533	Cord guard	2
7	1 609 B00 821	Cable Clip	2
12	1 609 B02 210	Suppression Capacitor	2
19	1 619 P03 833	Screw ECO-SYN St 3,5x16	2
52	1 609 B05 243	Switch Handle	2
53	1 609 B02 200	Cover	2
72	1 609 B02 220	Screw	2
154	1 609 B02 213	Shoulder Screw	2
156	1 609 B00 339	Cable Clip	2
175	1 609 B02 201	Soft Start-Up Module	2
178	1 609 B00 974	Lock Nut	2

Spare parts list

Item	Part Number	Description	Illustration
197	1 609 B04 029	Trigger	2
198	1 609 B04 021	Locking Bar	2
199	1 609 B04 022	Compression Spring	2
200	1 609 B00 637	Tapping Screw	2
201	1 609 B00 973	Screw	2
214	1 609 B00 583	Shrinkable Tube	2
216	1 609 B01 538	Cable Tape	2
240	1 609 BP7 059	Connection Block	2
46	1 609 B05 238	Table	3
62	1 609 B00 717	Pointer	3
66	1 609 B01 949	Nut	3
74	1 609 B00 704	Lock Nut	3
75	1 609 B00 670	Washer	3
84	1 609 B05 242	Support Plate	3
86	1 609 B05 240	Rod	3
87	1 609 B04 079	Knob	3
88	1 609 B05 241	Lever	3
89	1 609 B02 211	Spring	3
93	1 609 BP7 341	Contact strap	3
94	1 609 B03 727	Supporting foot	3
95	1 609 B03 729	Wear Plate	3
96	1 609 B04 108	Pivot Shaft	3
98	1 609 B03 723	Screw	3
99	1 609 B01 324	Plain Washer	3
105	1 609 BP7 143	Set screw	3
125	1 609 B03 762	Rotor	3
145	1 609 B00 660	Spring Washer	3
202	1 609 B00 627	Screw	3
38	1 609 B02 218	Warning Label	4
41	1 609 B02 204	Bushing	4
42	1 609 B02 205	Bushing	4
43	1 609 B04 242	Mitre Fence	4
44	1 609 B04 243	Mitre Fence	4
45	1 609 B02 206	Screw	4
54	1 609 B02 214	Cover	4

Spare parts list

Item	Part Number	Description	Illustration
57	1 609 B05 203	Bolt	4
63	1 609 B03 714	Wear Plate	4
64	1 609 B05 236	Clamping Bar	4
65	1 609 B05 268	Screw	4
68	1 609 B00 703	Plain Washer	4
69	1 609 B00 662	Washer	4
77	1 609 B00 705	Rubber Bushing	4
78	1 609 B03 722	Screw	4
80	1 609 BP7 098	Rubber Ring	4
81	1 609 BP7 026	Hexagon Socket Screw Key	4
652	1 609 B04 224	Clamp	4
840	1 609 B02 472	Assembly Base	4
51	1 609 B03 746	End cap	5
71	1 609 B04 244	Stop Plate	5
111	1 609 B01 668	Washer	5
122	1 609 B03 749	Hex Socket Head Cap Screw	5
133	1 609 B03 771	Pivot Pin	5
134	1 609 B03 779	Shoulder Screw	5
135	1 609 B03 754	Bushing	5
136	1 609 B03 767	Detent Pin	5
137	1 609 B03 757	Clip	5
138	1 609 B00 601	O-Ring	5
143	1 609 B03 753	Slide Stop	5
144	1 609 B03 752	Special Nut	5
152	1 609 B03 775	Dust Extraction	5
153	1 609 B03 777	Set screw	5
155	1 609 B01 512	Cable Clip	5
159	1 609 B04 204	Support bracket	5
161	1 609 B05 201	Shoulder Screw	5
162	1 609 B00 623	Screw	5
163	1 609 B01 168	Thread-Forming Screw	5
165	1 609 B02 209	Torsion Spring	5
166	1 609 B02 222	Sleeve	5
232	1 609 B00 691	Nut	5
234	1 609 B03 791	rubber lip	5

Spare parts list

Item	Part Number	Description	Illustration
235	1 609 B04 225	Plain Washer	5
238	1 609 B04 222	Rubber Strip	5
239	1 609 B00 633	Screw	5
848	1 609 B02 471	Yoke	5
47	1 609 B02 202	Pivot	6
59	1 609 B05 296	Plate	6
60	1 609 B05 298	Cover	6
118	1 609 B01 457	Wear Plate	6
119	1 609 B03 758	Pointer	6
123	1 609 BP7 343	Contact strap	6
124	1 609 B03 755	Knob	6
126	1 609 B03 763	Felt Washer	6
127	1 609 B03 769	Bolt	6
128	1 609 B02 215	Lever	6
129	1 609 BP7 081	Screw	6
130	1 609 B03 773	Friction Plate	6
131	1 609 B01 041	Hex Nut	6
132	1 609 B03 776	Stop bolt	6
140	1 609 BP7 053	Compression Spring	6
141	1 609 BP7 045	Plain Washer	6
150	1 609 B02 203	Retaining Plate	6
151	1 609 B03 766	Retaining Plate	6
164	1 609 B01 690	Screw	6
187	1 609 B03 774	Ball Bearing	6
188	1 609 B03 780	Spacer	6